

Integrated machine

21.5+17.3 inch Dual screen

Capacitive screen multi finger touch control



Advantage

Main selling points of the product

A large blue 'A+' icon representing high panel quality.

Grade A+Panel
No bad pixel



Resolution
1920*1080



Stable
performance



Long
service life



Waterproof and
dustproof



Quiet heat
dissipation

Parameter

For more parameters, please consult customer service

Supply voltage	100V-240V
Host voltage	12V 5A
Display	21.5 inch resolution 1920* 1080, 16:9 TFT LED
Touch screen	10point Capacitive Touch
CPU	Intel Baytrail J1900 / J4125 / J6412 / I3 / I5 (optional)
Memory	4GB / 8GB /16GB (optiona)
Hard disk	64G / 128G / 256G SSD / 500G HDD (optional)
COM	2*RS232COM ports
USB	2-4 USB
Interface	Dc in*1 / HDMI*1 / VGA*1 / USB3.0*2 / RJ 45*1 USB2.0*4 / Audio*1 / COM*2
MSR	3-Track MSR
Customer screen	17.3 inch resolution 1920* 1080, 16:9
Material	Aluminium alloy case
Total body weight	11KG

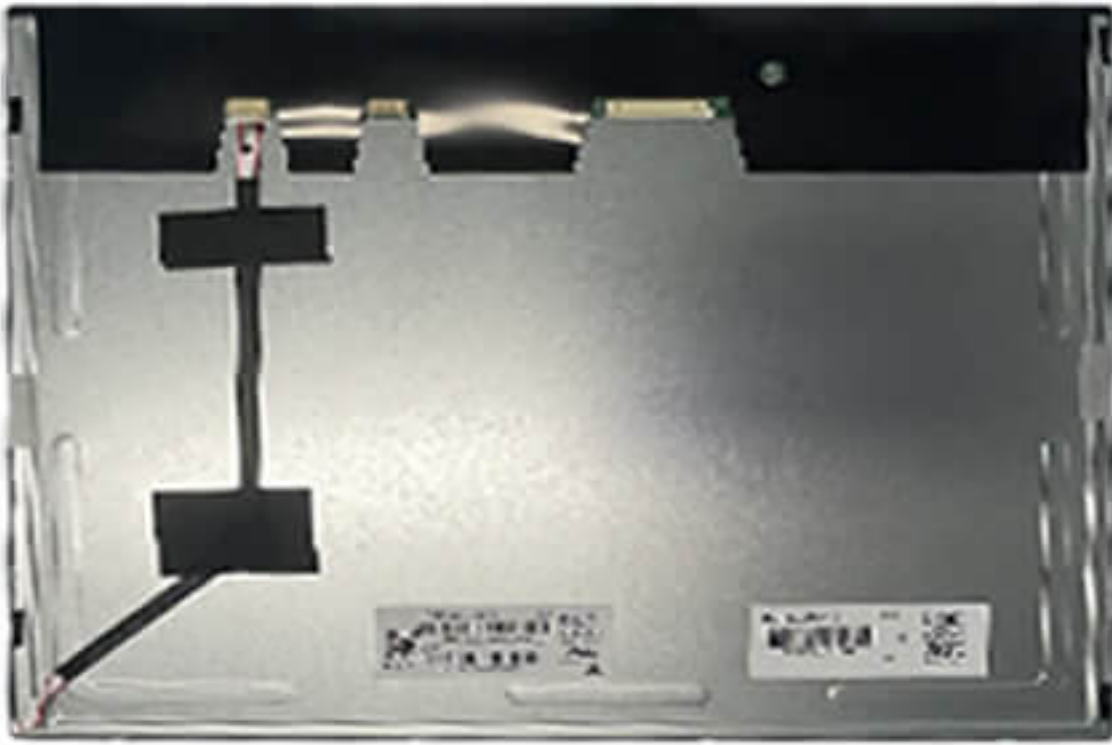
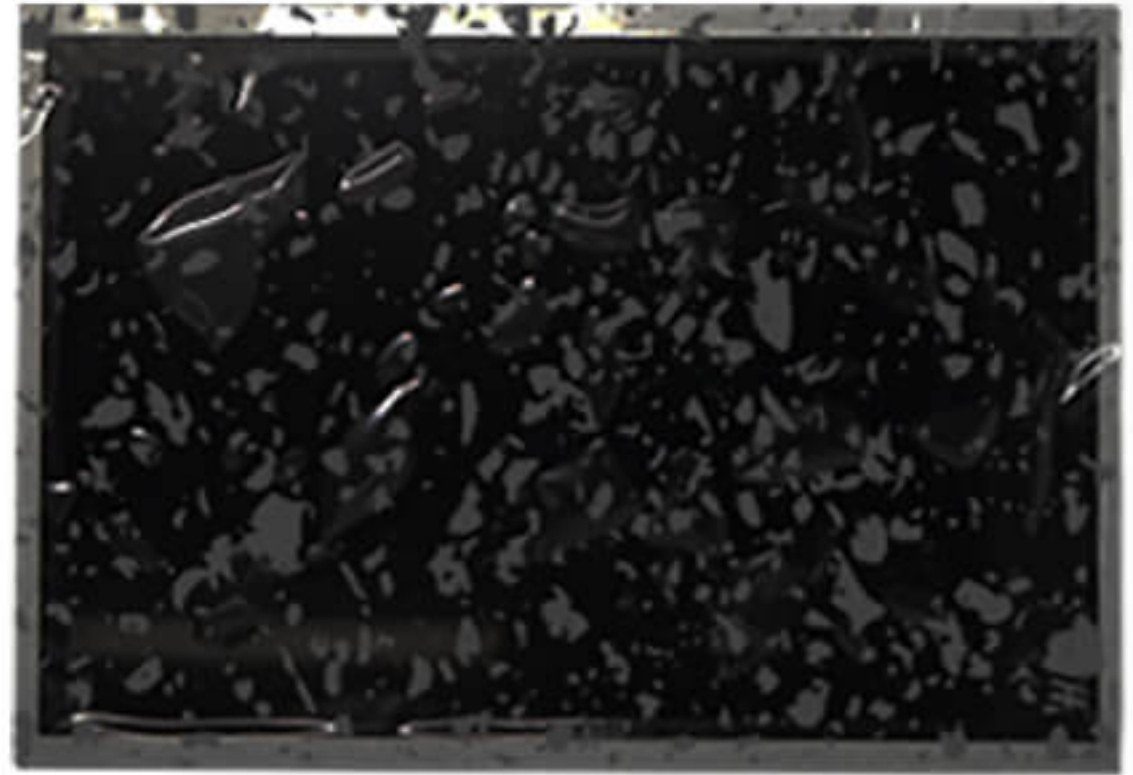
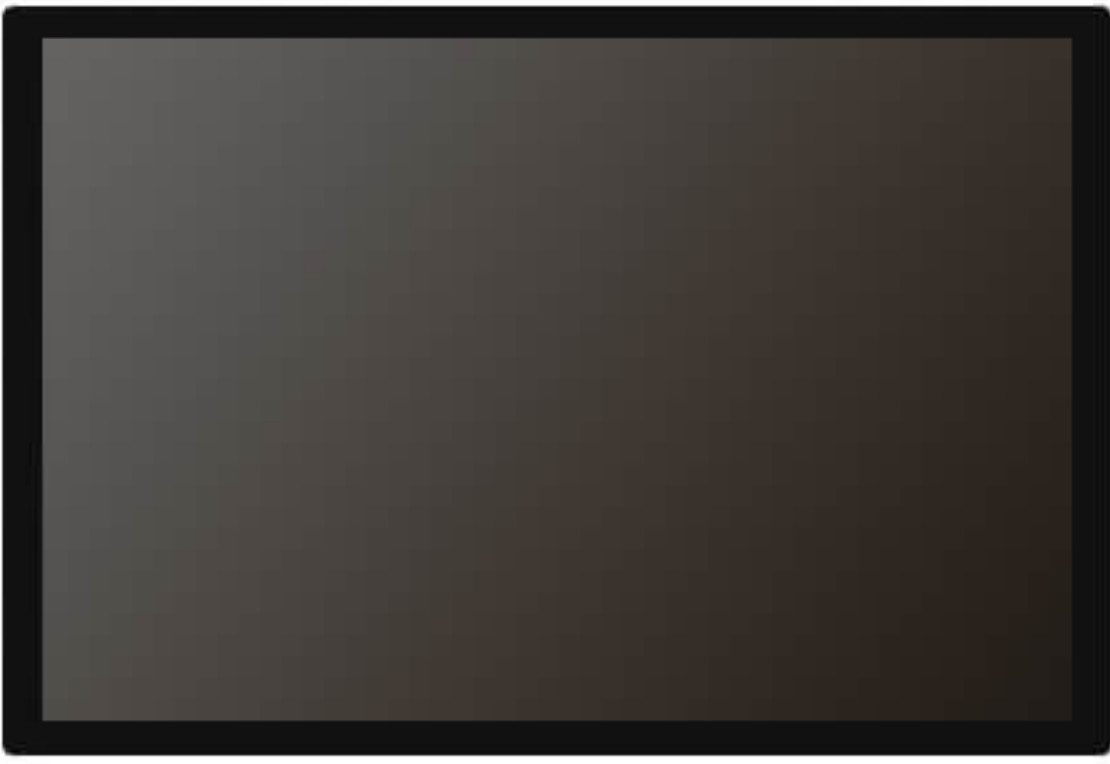
Multi touch technique

10 finger capacitive touch control for stable and continuous touch



High definition

Provide customers with a better viewing experience



BOE SCREEN

MORE DELICATE AND CLEAR
SILKY TEXTURE
HD TOUCH SCREEN

SCREEN OF A CERTAIN MANUFACTURER

INACCURATE COLOR
NOT DURABLE
EASILY TO GET DAMAGED



Product size

Reasonable design provides a more aesthetic and practical experience



(Total height of product: **367mm**)

**The size of the product is measured manually. There may be some deviation in the actual situation, subject to the actual object!*



(Positive left side)



(The back)



(Right side)

Built-in speaker

Place an order for collection prompt to avoid missing payment



Hidden Line Design

Convenient and fast, making people worry free



Full lamination

Waterproof / Dustproof / Oilproof



Rich Interfaces

Meet multiple device connectivity needs

